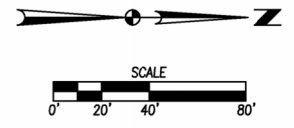
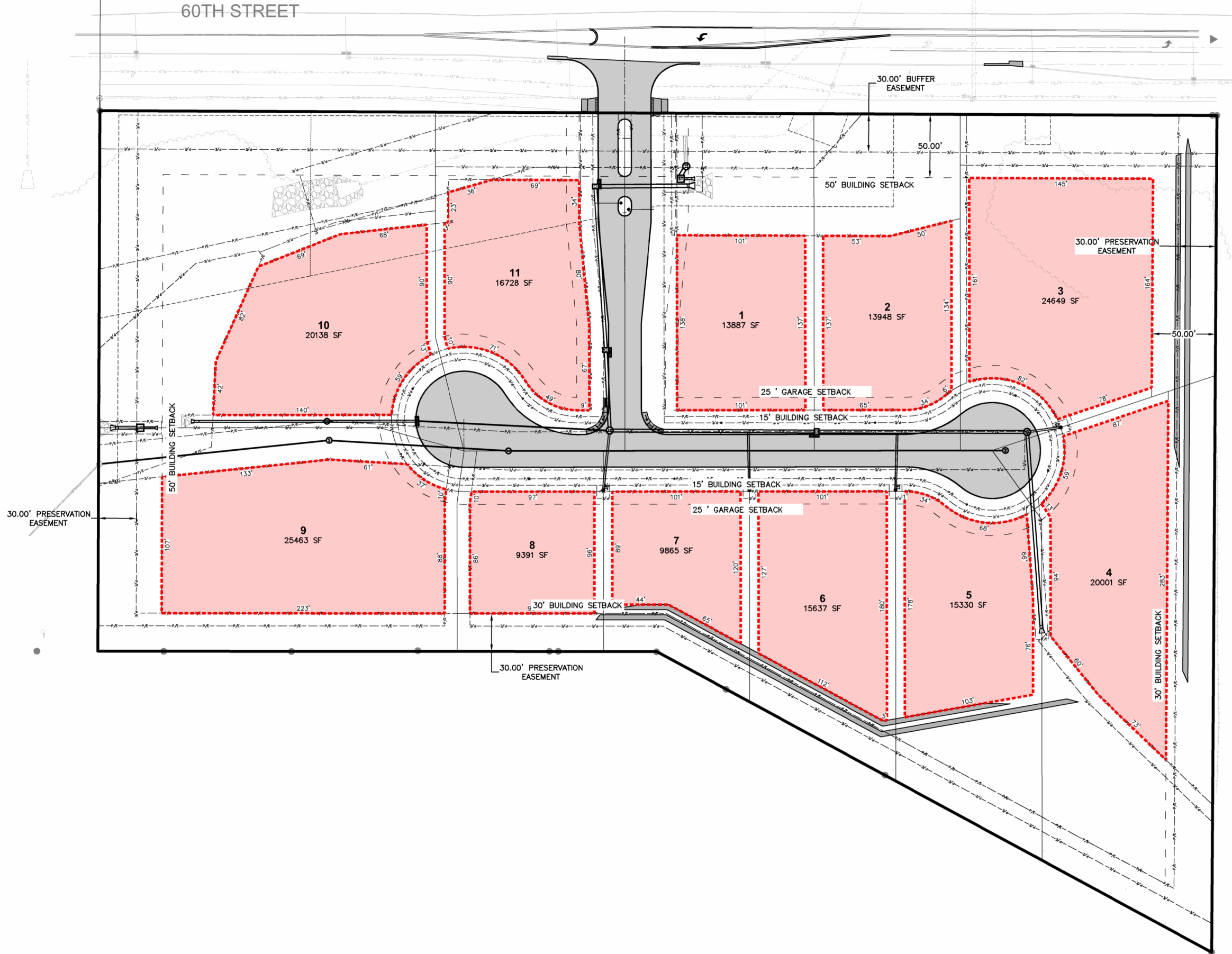


FILE: H:\2019\1909460\EXHIBITS\1909460-BUILDABLE AREA EXHIBIT - 2023-05-15.DWG  
 PLOTTED BY: JARED MURRAY  
 DATE: 5/15/2023 11:19 AM  
 TECH: JMM



**WILDER PINES BUILDABLE LOT EXHIBIT**  
 WEST DES MOINES, IOWA

**ESA**  
 CIVIL DESIGN ADVANTAGE

3405 S.E. CROSSROADS DRIVE, SUITE G  
 GRIMES, IOWA 50111  
 PHONE: (515) 369-4400 FAX: (515) 369-4410

ENGINEER: JMM  
 TECH:

REVISIONS	DATE
	05/15/2023

1909.460